

Equipment for Commercial Vehicles



Sprinter UPFIT GUIDE



ASK YOUR LOCAL
DISTRIBUTOR ABOUT
**RANGER
QUICKSHIP**



1 (800) 565-5321 // www.rangerdesign.com

RANGER
DESIGN

In 1988, with a passion for innovation and service, Ranger began to build equipment for commercial vehicles.

Now with locations in Rochester, NY, San Francisco, CA and Montreal, Canada, and a strong network of dealers across North America, Ranger Design services all trades and the same values still drive the company today.

In our modern fast-paced world, Ranger combines old-fashioned service with state of the art technology

to bring you consistent quality and strength to meet the toughest demands. This is why more Tradesmen and Fleets across the nation are turning to Ranger solutions for shelving units, storage systems, partitions and ladder racks to address their unique needs.

CONTACT US TODAY AND EXPERIENCE THE RANGER DIFFERENCE FOR YOURSELF!

// ROCHESTER, NY
MANUFACTURING PLANT



// SAN FRANCISCO, CA
SALES OFFICE



// MONTREAL, CANADA
MANUFACTURING PLANT



RANGER HAS OVER
300
DISTRIBUTERS
ACROSS THE CONTINENT



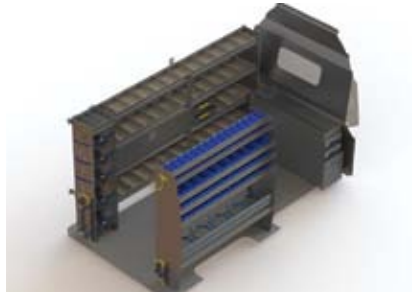
VISIT
**RANGERDESIGN.COM/
FIND-DEALER/**
TO FIND A DEALER
NEAR YOU!

TABLE OF CONTENTS

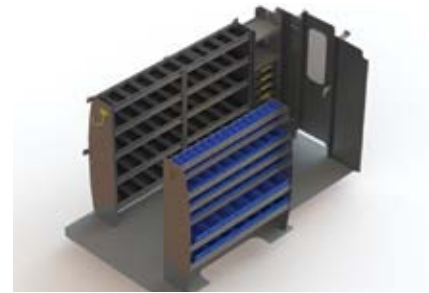
PACKAGES



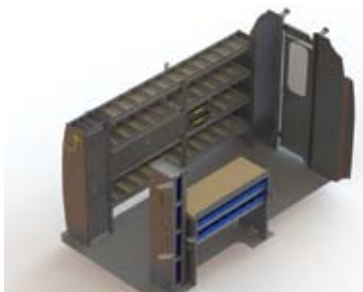
// Contractor 5-6



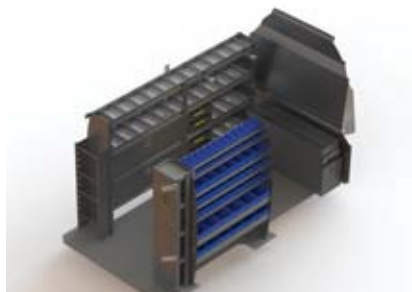
// HVAC 7-8



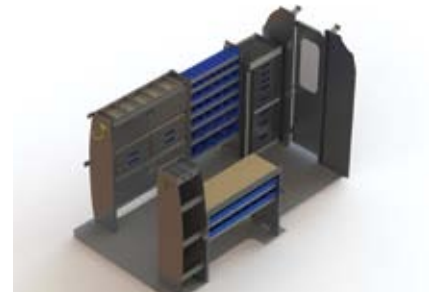
// Plumber 9-10



// Service 11-12



// Electrical 13-14



// Work Station 15-16



// Delivery 17-18

RANGER'S MISSION

"HELPING MOBILE TECHNICIANS WORK MORE EFFECTIVELY BY PROVIDING ORGANIZED STORAGE SOLUTIONS"

PRODUCTS



// Accessories 19-20



// Ladder Racks 21-22



// Layout Guide Back Cover

QUICKSHIP

RANGER DESIGN PROVIDES THE POWER OF **24-HOUR SHIPPING**

To get you on the road to success faster than ever! Ranger **Quickship** guarantees that all Sprinter packages ordered with the **Quickship** service will ship within 24 hours if ordered before 1PM EST. Visit our website www.rangerquickship.com for ordering details or contact one of our Customer Service representatives at cs@rangerdesigninc.com or call Toll-Free at 1 (800) 565-5321



We are pleased to offer efficient, personalized service. At Ranger you can be sure of speaking to one of our professionals every time you call. Our dedicated team of friendly representatives is always ready to help you out with any questions or requests you may have!

TOUGH

CRASH TESTED



Quality is what drives us at Ranger and it's what keeps van fleets performing at peak efficiency. Your team needs to be sure that their equipment is going to stay on the job, week in and week out, year after year.

We engineer "tough" into each component of each van package ensuring durability as well as perfect fit and finish. We've also crash-tested products to prove them for driver safety and structural integrity.



QUIET

A PEACEFUL RIDE WITH **NO RATTLES**

Tough enough for your biggest jobs and quiet enough for a peaceful ride, the quality of Ranger equipment proves itself over and over again.

Our shelving and partitions have consistently proven to be significantly quieter than any other upfits in the marketplace.



PAYLOAD

ENGINEERED TO **SAVE WEIGHT**

Ranger Design understands the challenges that the modern fleet manager faces. Whether it's a need to reduce the fuel bill, downsize vehicles without downsizing what you need to carry or simply trying to reduce your carbon footprint, Ranger's innovative storage designs can help.



PRODUCT LINE COMPARISON



RANGER **FLEETLINE** AND **PROLINE** PRODUCT GROUPS ENSURE THAT FLEETS OF ANY SIZE HAVE THE BEST EQUIPMENT TO FIT THEIR BUDGET, TRADE OR FUEL SAVING TARGETS.



WHY BUY FLEETLINE?

You have a tight budget. You want better quality and price than other steel products on the market.

WHY BUY PROLINE?

You want the toughest, quietest product on the market. You need to optimize payload without sacrificing quality.

PRODUCTS

- Shelving
- Partitions
- Drawers
- Accessories

- Shelving
- Partitions
- Drawers
- Accessories
- Ladder Racks

PRIMARY MATERIAL

- Steel

- Aluminum

BENEFITS

- Tough
- Low cost
- Quiet

- Toughest
- Lightweight
- Quiet

WARRANTY

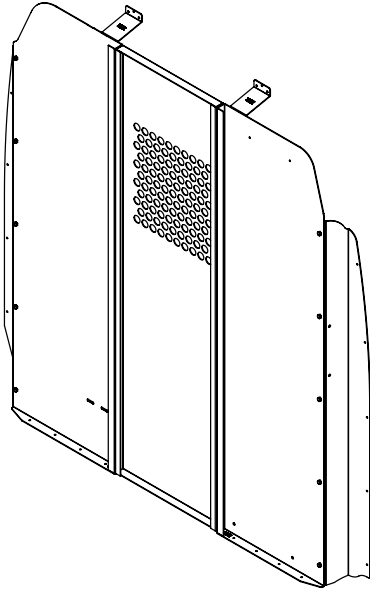
- 3 years

- 10 years

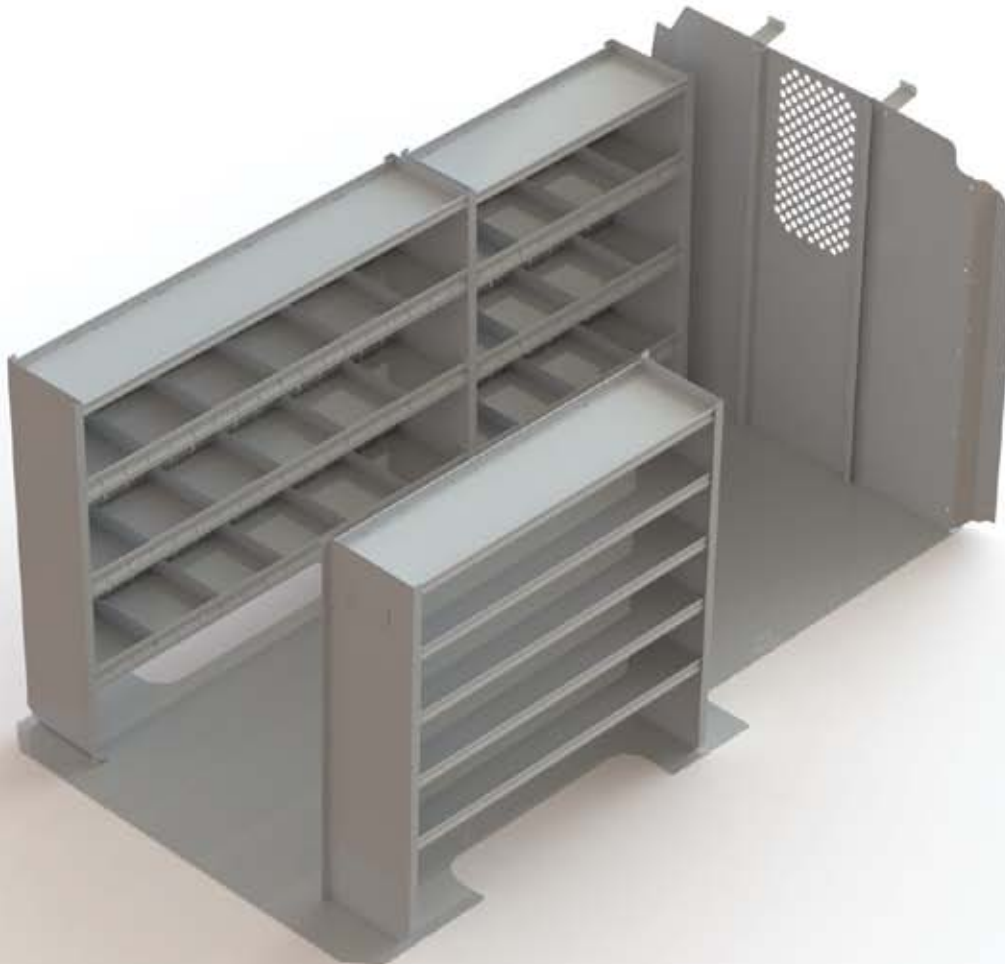
NOTE: Throughout the catalog **FLEETLINE** products are depicted with **YELLOW** and **PROLINE** products with **BLUE**.



THE PERFECT FIT FOR YOUR TOUGHEST JOBS



Optional: X50-B Fleetline Tool Drawer



144" WHEELBASE

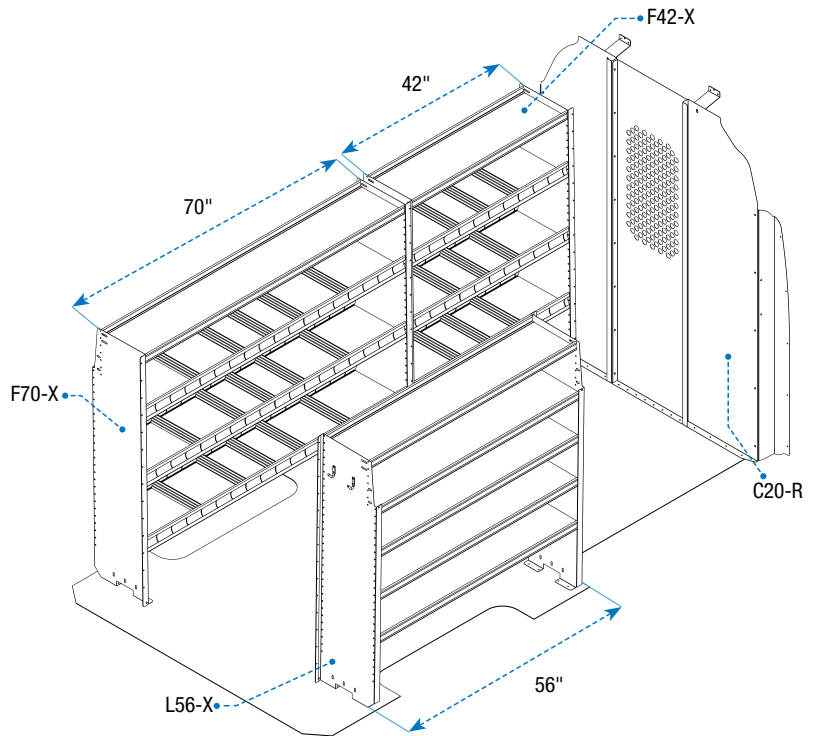


Z10-P Standard Roof 340 lbs

- 1 **C20-R** Straight Partition, No Access
- 1 **F70-X** Square Back Shelving Unit, 70"w
- 1 **F42-X** Square Back Shelving Unit, 42"w
- 1 **L56-X** Square Back Shelving Unit, 56"w
- 2 **Y30-C** Coat Hook

Z10-R High Roof 350 lbs

- 1 **C20-S** Straight Partition, No Access
- 1 **F70-X** Square Back Shelving Unit, 70"w
- 1 **F42-X** Square Back Shelving Unit, 42"w
- 1 **L56-X** Square Back Shelving Unit, 56"w
- 2 **Y30-C** Coat Hook

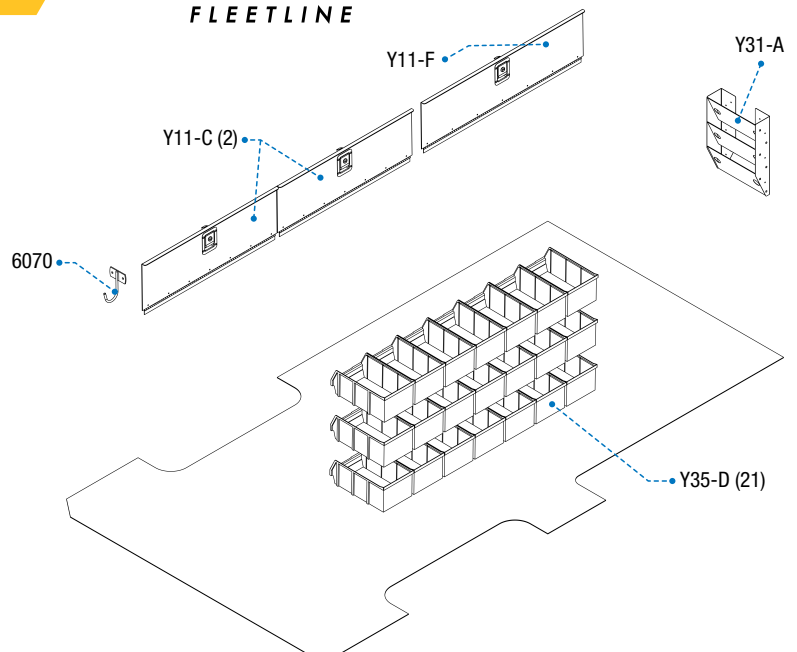


UPGRADE KIT



Z30-R Upgrade Kit 68 lbs

- 2 **Y11-C** Fleetline Locking Door
- 1 **Y11-F** Fleetline Locking Door
- 1 **6070** Fixed Hook
- 1 **Y31-A** 3 Slot Paper Holder
- 21 **Y35-D** Large Bin



HVAC PACKAGES



Model # 5760 & 6086



Model # 5025, 5010, 5048



Model # 6088 & 6003



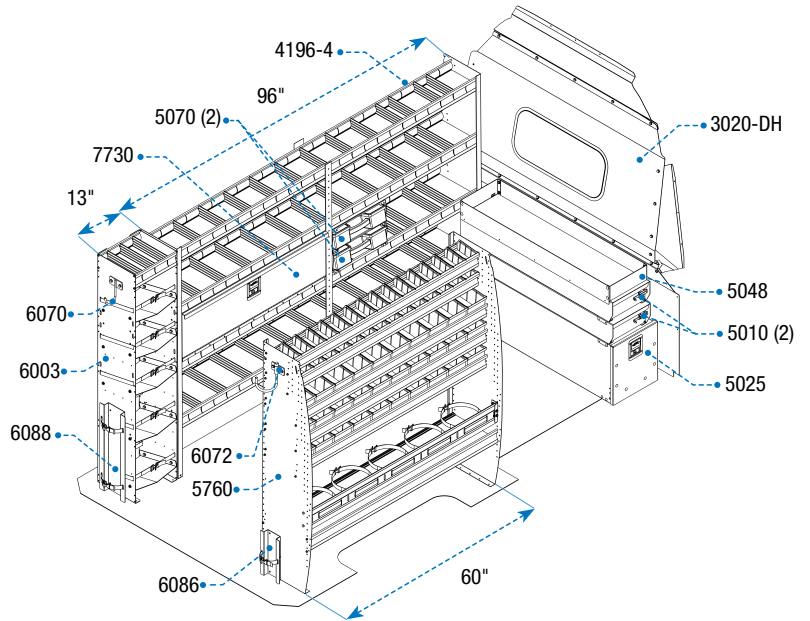


144" WHEELBASE



G012 Standard Roof 469 lbs

1	3020-DL	Solid Partition with window
1	4196-4	4 Shelf Unit
2	5010	Partslider
1	5025	Tool Drawer
1	5048	Top Edge
2	5070	Partskeeper
1	5760	Refrigerant bin unit
1	6003	5 Tier Refrigerant Rack
1	6070	Fixed Hook
1	6072	Swivel Hook
1	6086	Small Bottle Holder
1	6088	Large Bottle Holder
1	7730	Locking Door



G112 High Roof 471 lbs

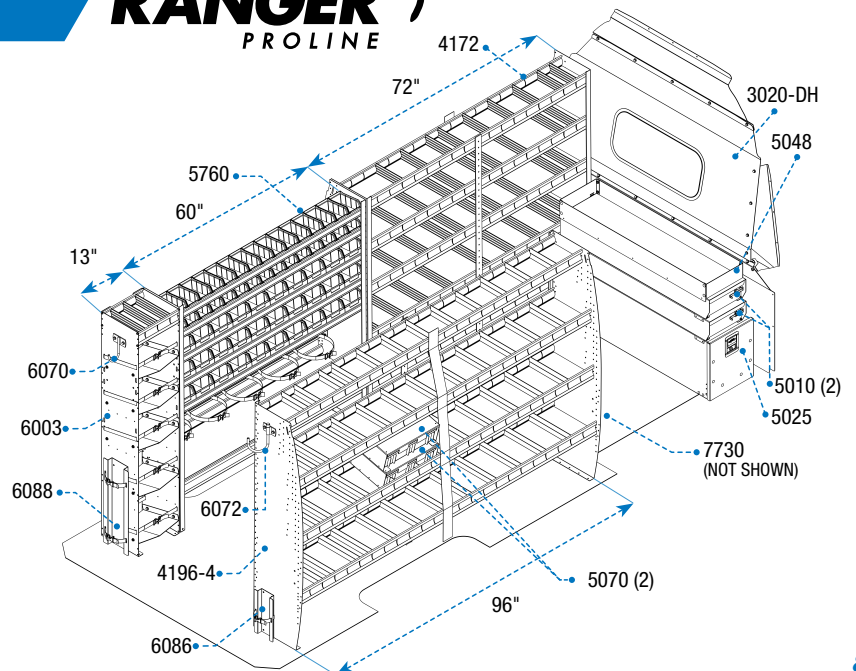
1	3020-DH	Solid Partition with window
1	4196-4	4 Shelf Unit
2	5010	Partslider
1	5025	Tool Drawer
1	5048	Top Edge
2	5070	Partskeeper
1	5760	Refrigerant bin unit
1	6003	5 Tier Refrigerant Rack
1	6070	Fixed Hook
1	6072	Swivel Hook
1	6086	Small Bottle Holder
1	6088	Large Bottle Holder
1	7730	Locking Door

170" WHEELBASE



G612 High Roof 547 lbs

1	3020-DH	Solid Partition with window
1	4172-4	4 Shelf Unit
1	4196-4	4 Shelf Unit
2	5010	Partslider
1	5025	Tool Drawer
1	5048	Top Edge
2	5070	Partskeeper
1	5760	Refrigerant bin unit
1	6003	5 Tier Refrigerant Rack
1	6070	Fixed Hook
1	6072	Swivel Hook
1	6086	Small Bottle Holder
1	6088	Large Bottle Holder
1	7730	Locking Door



PLUMBER PACKAGES



Model # 5086, 4184-5 & 3069-DH



Model # 7960



Model # 4184-5 & 5086





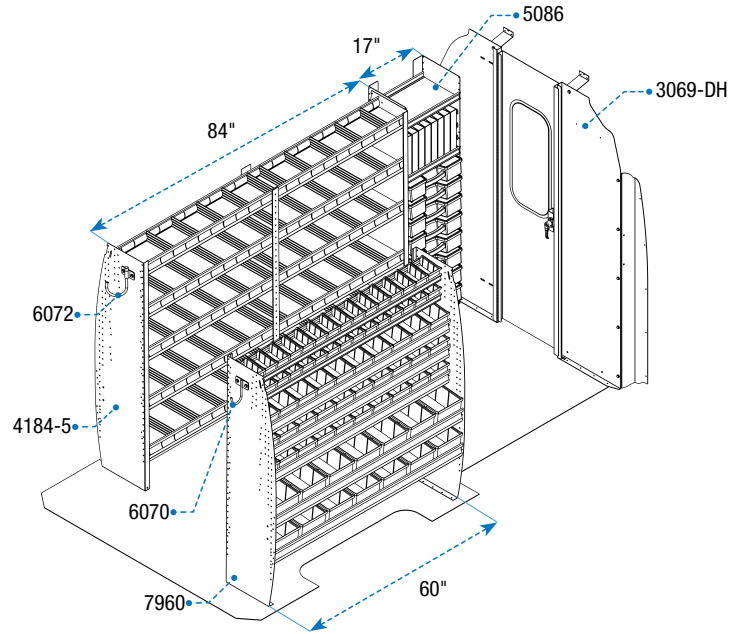
144" WHEELBASE



G015 Standard Roof

376 lbs

1	3069-DL	Swinging Door Partition
1	4184-5	5 Shelf Unit
1	5086	Partskeeper Cabinet
1	6070	Fixed Hook
1	6072	Swivel Hook
1	7960	Bin Unit



G115 High Roof

379 lbs

1	3069-DH	Swinging Door Partition
1	4184-5	5 Shelf Unit
1	5086	Partskeeper Cabinet
1	6070	Fixed Hook
1	6072	Swivel Hook
1	7960	Bin Unit

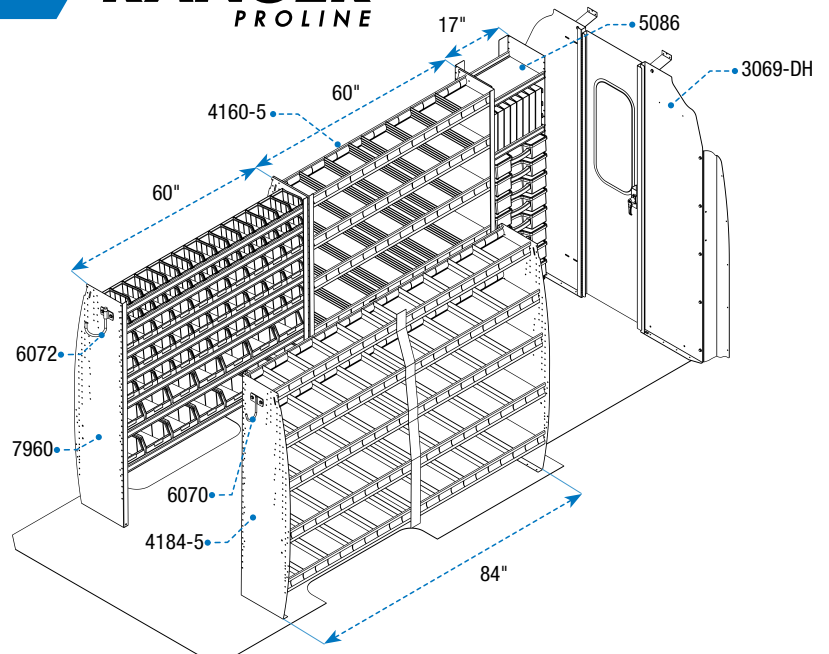
170" WHEELBASE



G615 High Roof

457 lbs

1	3069-DH	Swinging Door Partition
1	4160-5	5 Shelf Unit
1	4184-5	5 Shelf Unit
1	5086	Partskeeper Cabinet
1	6070	Fixed Hook
1	6072	Swivel Hook
1	7960	Bin Unit



SERVICE PACKAGES



Model # 7211 (vise not included in package)



Model # 7211 & 7108



Model # 7111



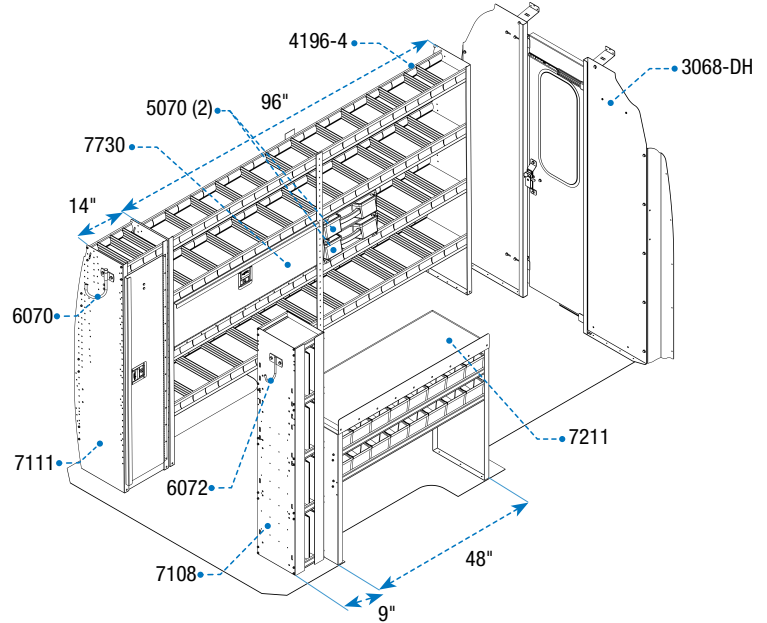
144" WHEELBASE



G016 Standard Roof

338 lbs

1	3068-DL	Sliding Door Partition
1	4196-4	4 Shelf Unit
2	5070	Partskeeper
1	6070	Fixed Hook
1	6072	Swivel Hook
1	7108	Book Shelf
1	7111	Locker
1	7211	Workbench
1	7730	Locking Door



G116 High Roof

340 lbs

1	3068-DH	Sliding Door Partition
1	4196-4	4 Shelf Unit
2	5070	Partskeeper
1	6070	Fixed Hook
1	6072	Swivel Hook
1	7108	Book Shelf
1	7111	Locker
1	7211	Workbench
1	7730	Locking Door

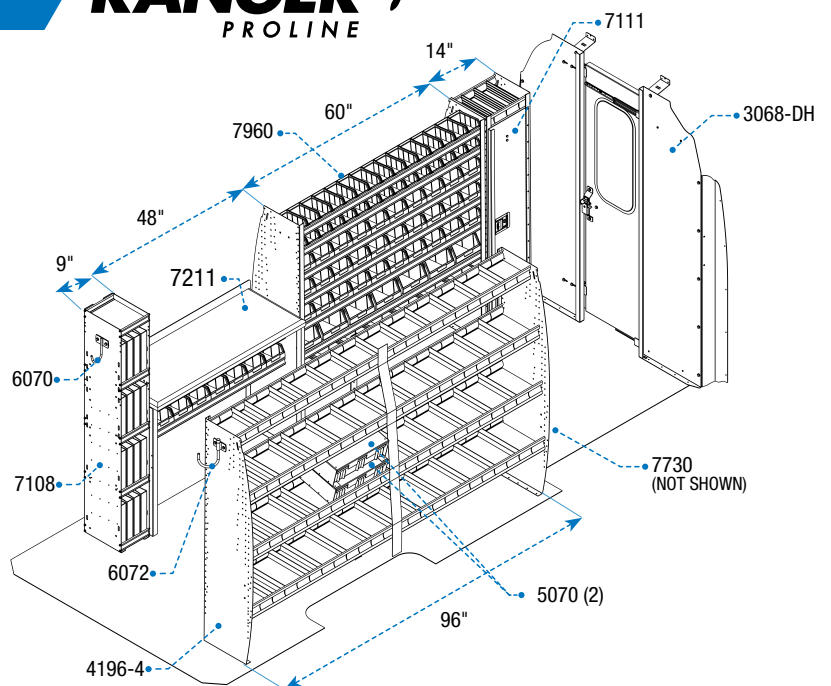
170" WHEELBASE



G616 High Roof

483 lbs

1	3068-DH	Sliding Door Partition
1	4196-4	4 Shelf Unit
2	5070	Partskeeper
1	6070	Fixed Hook
1	6072	Swivel Hook
1	7108	Book Shelf
1	7111	Locker
1	7211	Workbench
1	7730	Locking Door
1	7960	Bin Unit



ELECTRICAL / TELECOM PACKAGES



Model # 5020, 5010, 5048



Model # 7948 & 7108



Model # 7124 x 2, 4196-4, 5070 x 4 & 7730 x 2



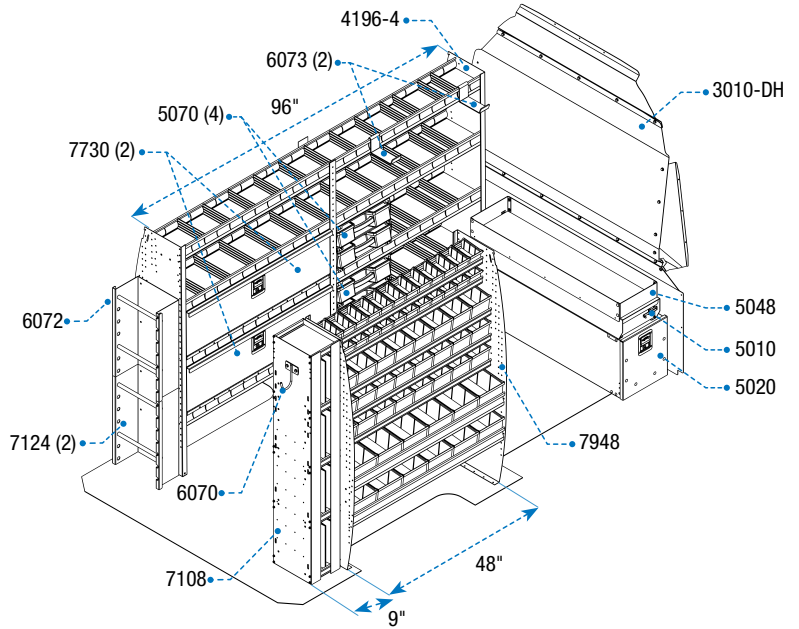
144" WHEELBASE



G011 Standard Roof

452 lbs

1	3010-DL	Solid Partition
1	4196-4	4 Shelf Unit
1	5010	Partslider
1	5020	Tool Drawer
1	5048	Top Edge
4	5070	Partskeepers
1	6070	Fixed Hook
1	6072	Swivel Hook
2	6073	Large Movable Hook
1	7108	Bookshelf
2	7124	Reel Holder
2	7730	Locking Door
1	7948	Bin Unit



G111 High Roof

454 lbs

1	3010-DH	Solid Partition
1	4196-4	4 Shelf Unit
1	5010	Partslider
1	5020	Tool Drawer
1	5048	Top Edge
4	5070	Partskeepers
1	6070	Fixed Hook
1	6072	Swivel Hook
2	6073	Large Movable Hook
1	7108	Bookshel
2	7124	Reel Holder
2	7730	Locking Door
1	7948	Bin Unit

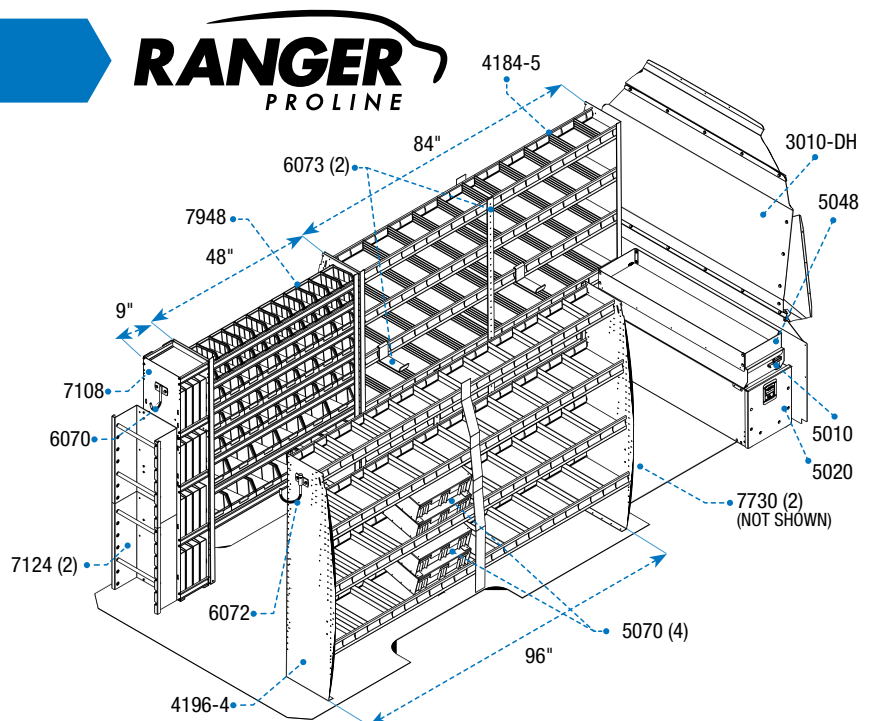
170" WHEELBASE



G611 High Roof

556 lbs

1	3010-DH	Solid Partition
1	4184-5	5 Shelf Unit
1	4196-4	4 Shelf Unit
1	5010	Partslider
1	5020	Tool Drawer
1	5048	Top Edge
4	5070	Partskeepers
1	6070	Fixed Hook
1	6072	Swivel Hook
2	6073	Large Movable Hook
1	7108	Bookshelf
2	7124	Reel Holder
2	7730	Locking Door
1	7948	Bin Unit



WORK STATION PACKAGES



Model # 7211 & 7111



Model # 7211, 7111, 7730, 5069-2 & 4148-4



G117 Package Shown



G117 Package Shown



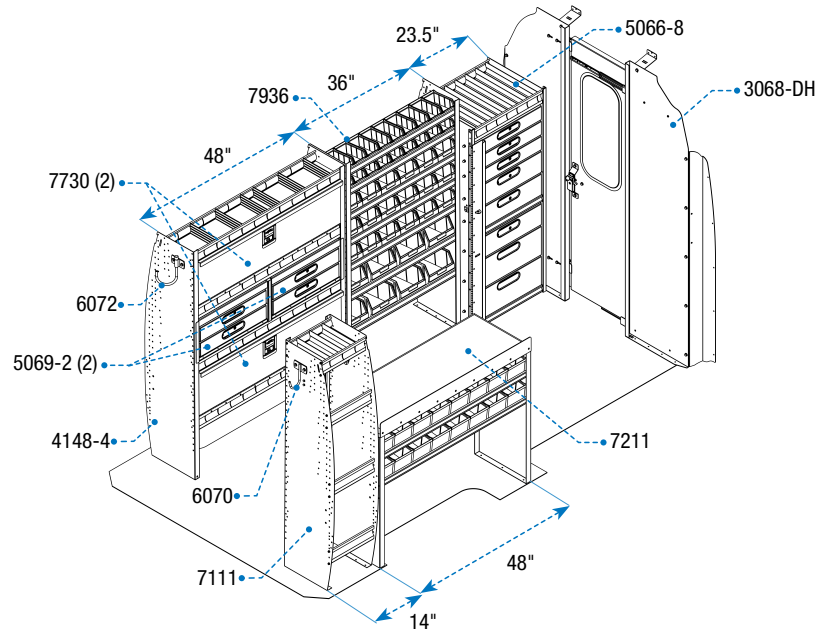
144" WHEELBASE



G017 Standard Roof

594 lbs

1	3068-DL	Sliding Door Partition
1	4148-4	4 Shelf Unit
1	5066-8	8 Drawer Unit
2	5069-2	2 Drawer Unit
1	6070	Fixed Hook
1	6072	Swivel Hook
1	7111	Locker
1	7211	Workbench
2	7730	Locking Door
1	7936	Bin Unit



G117 High Roof

596 lbs

1	3068-DH	Sliding Door Partition
1	4148-4	4 Shelf Unit
1	5066-8	8 Drawer Unit
2	5069-2	2 Drawer Unit
1	6070	Fixed Hook
1	6072	Swivel Hook
1	7111	Locker
1	7211	Work Bench
2	7730	Locking Door
1	7936	Bin Unit

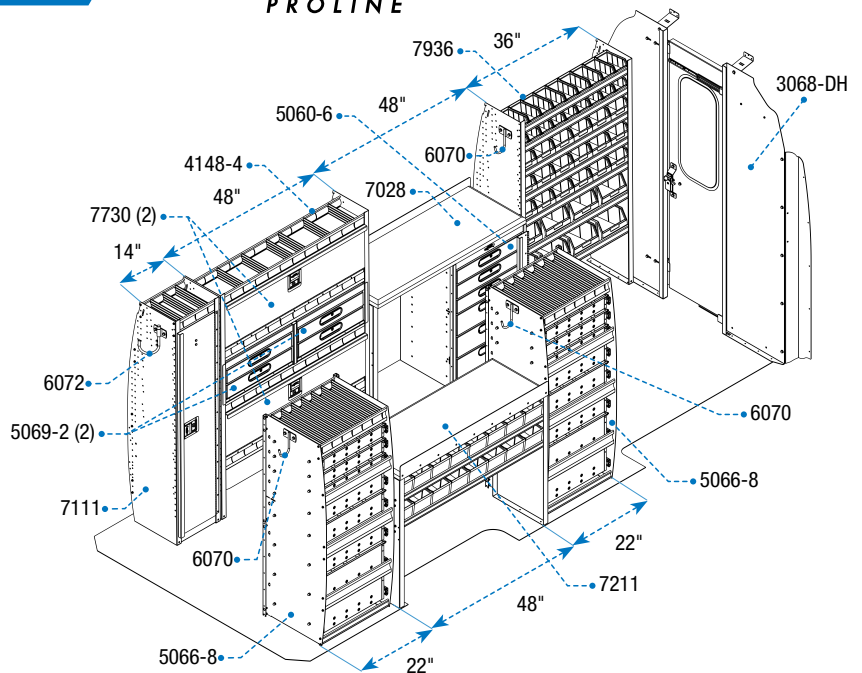
170" WHEELBASE



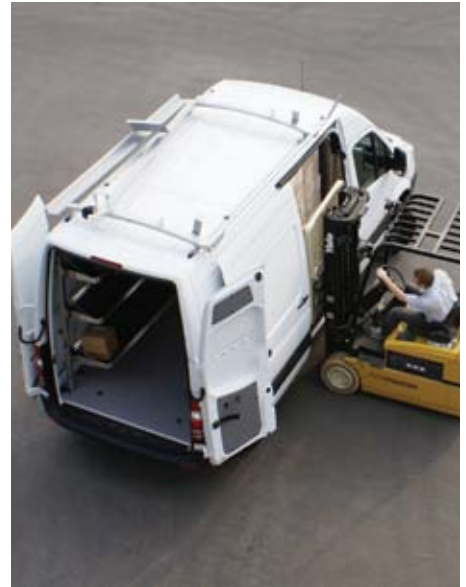
G617 High Roof

926 lbs

1	3068-DH	Sliding Door Partition
1	4148-4	4 Shelf Unit
1	5060-6	6 Drawer Unit
2	5066-8	8 Drawer Unit
2	5069-2	2 Drawer Unit
3	6070	Fixed Hook
1	6072	Swivel Hook
1	7111	Locker
1	7208	Workbench
1	7211	Workbench
2	7730	Locking Door
1	7936	Bin Unit



DELIVERY PACKAGES



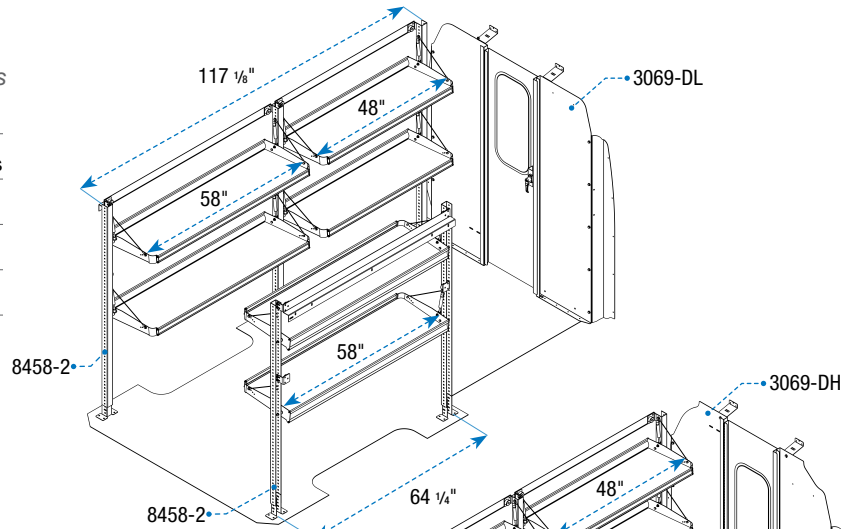
144" WHEELBASE



G019 Standard Roof

254 lbs

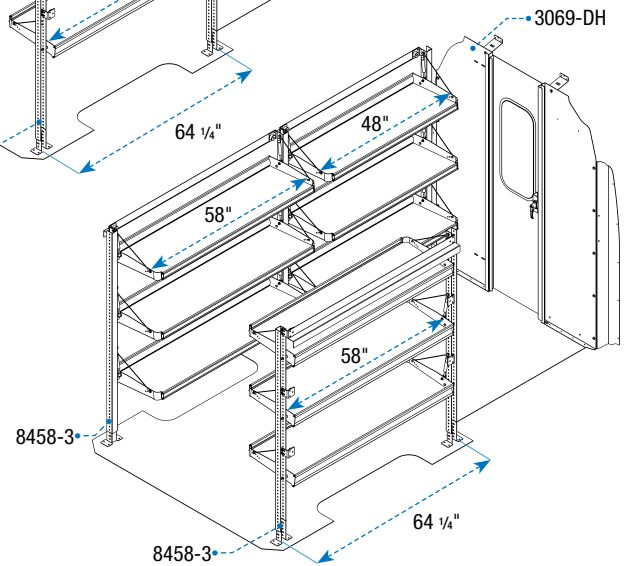
1	3069-DL	Swinging Door Partition
2	8458-2	Fold-Away Shelving Unit w/ 2 Levels
2	84-2148	21" x 48" Shelf
1	84-3051	51" Mounting Bar
1	84-7063	63 1/2" Post with foot



G119 High Roof

311 lbs

1	3069-DH	Swinging Door Partition
2	8458-3	Fold-Away Shelving Unit w/ 3 Levels
2	84-1848	18" x 48" Shelf
1	84-2148	21" x 48" Shelf
1	84-3051	51" Mounting Bar
1	84-7063	63 1/2" Post with foot



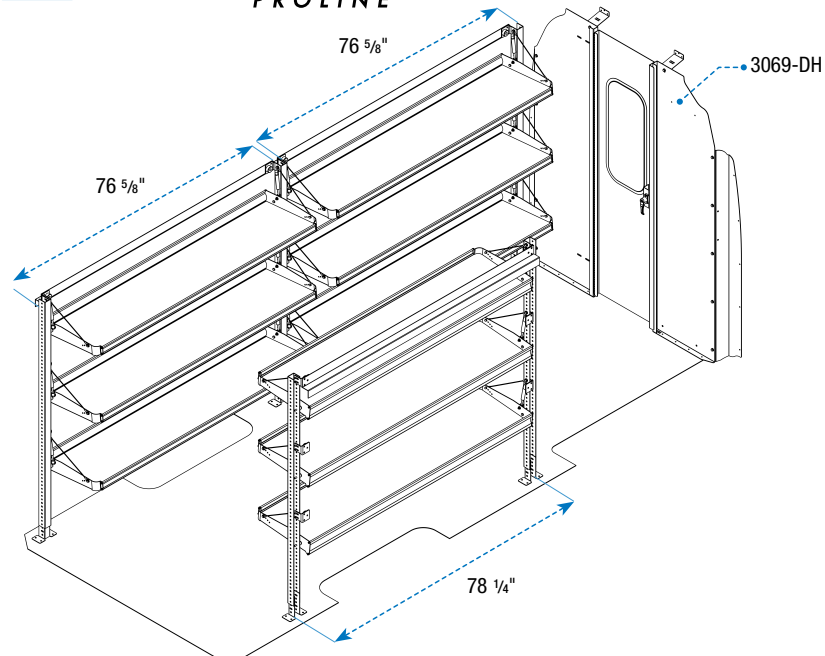
170" WHEELBASE



G619 High Roof

369 lbs

1	3069-DH	Swinging Door Partition
2	8472-3	Fold-Away Shelving Unit w/ 3 Levels
2	84-1872	18" x 72" Shelf
1	84-2172	21" x 72" Shelf
1	84-3075	75" Mounting Bar
1	84-7063	63 1/2" Post with foot



CHOOSE YOUR ACCESSORIES

DRAWERS



TOUGH

High impact drawer slides and high weight capacity

EFFICIENT

Maximizes space by being designed to fit into the contour of the partition

EASY TO USE

Cable pull, thumb latch, handle latch

5020
TOOL DRAWER
Aluminum

48" D x 14" W x 16" H

320 lbs

1 hr

46 lbs

5010
PARTSLIDER DRAWER
Aluminum

48" D x 12" W x 6" H

150 lbs

0.5 hr

30 lbs

5048
TOP EDGE
Aluminum
(for 5010 Partslider)

48" D x 12" W x 4" H

0.2 hr

5 lbs

FLEETLINE SMALL DRAWERS

TOUGH

Roller bearing slides and key lock

EFFICIENT

Stackable

EASY TO USE

Slam latch

X50-B
FLEETLINE SMALL DRAWER
Steel

12.5" D x 19" W x 10.5" H

20 lbs

0.3 hr

19 lbs

X50-C
FLEETLINE SMALL DRAWER
Steel

12.5" D x 19" W x 10.5" H

20 lbs

0.3 hr

20 lbs



LEGEND

DIMENSIONS


WEIGHT CAPACITY

WEIGHT

CHOOSE YOUR ACCESSORIES


6070
6" HOOK
WITH 3" OPENING
 Powder Coated Steel

 0.2 hr

 1 lb




6072
8" SWIVEL HOOK
WITH 4" OPENING
 Powder Coated Steel

 0.2 hr

 1 lb




Y35-B
MEDIUM BIN
 Plastic

 10" D x 6" W x 4.5" H





Y35-D
LARGE BIN
 Plastic


 14" D x 8" W x 5.5" H



6061
2-SLOT DEEP
PAPER HOLDER
 Aluminum


 3.75" D x 12.75" W x 12" H


 0.2 hr

 2 lbs



6063
5-SLOT DEEP
PAPER HOLDER
 Aluminum

 3.75" D x 12.75" W x 24" H


 0.2 hr


 5 lbs



6086
SMALL BOTTLE HOLDER
 Aluminum
(Includes one 36" blue nylon strap)

 6" D x 12" H


 0.2 hr

 1 lb



6088
LARGE BOTTLE HOLDER
 Aluminum
(Includes two 36" blue nylon straps)


 8" W x 24" H


 0.2 hr

 2 lbs

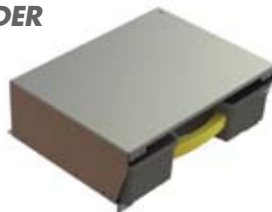


5070
PARTSKEEPER CARRY CASE
WITH ALUMINUM HOLDER
 Universal Mount


 14" W x 17" W x 5.5" H


 0.5 hr


 7 lbs



6041
LOCKING
CABINET
 Aluminum

 15" D x 15.5" W x 33" H

 0.7 hr

 26 lbs



**HAVEN'T FOUND
 WHAT YOU'RE
 LOOKING FOR?**

**MANY MORE
 ACCESSORIES
 AVAILABLE!**

Call Toll-Free at **1 (800) 565-5321** or
 visit us online at **www.rangerdesign.com**

 **INSTALL TIME**

 **SHELF OPENING**

 **WHEELBASE**

 **ROOF HEIGHT**

CHOOSE YOUR **LADDER RACK**

RANGER
MAX RACK



INTRODUCING **MAX RACK** THE FASTER, SAFER, TOUGHER DROP DOWN LADDER RACK

AVAILABLE EARLY 2015

Ranger's new *Drop Down Ladder System* is designed to help make a tradesperson's workday easier and more productive. The industry-exclusive rack is fast because it lowers the ladder in one simple motion. It comes down exceptionally low, so you don't have to reach above your head. There's no need to stand below the ladder as it lowers, so it's safe, too. Ranger put their Drop-Down through rigorous real workday testing, so it's tough. **Faster, safer, tougher!**

*Preproduction model shown. Production model may vary.



CARGO RACK

2 BAR
Aluminum
Powder Coated White



68"



400 lbs



0.8 hr



18 lbs

1505-DH

CARGO RACK

3 BAR
Aluminum
Powder Coated White



68"



600 lbs



1.2 hr



27 lbs

1505-DH3

LEGEND



DIMENSIONS



WEIGHT CAPACITY



WEIGHT

CHOOSE YOUR LADDER RACK

STANDARD LADDER RACK

2 BAR
Aluminum
Powder Coated White



1510-DH 68" 400 lbs 0.8 hr 18 lbs

STANDARD LADDER RACK

3 BAR
Aluminum
Powder Coated White



1510-DH3 68" 600 lbs 1.2 hr 27 lbs

COMBINATION LADDER RACK

2 BAR
Aluminum
Powder Coated White



1525-DH 68" 400 lbs 1.7 hr 43 lbs

COMBINATION LADDER RACK

3 BAR
Aluminum
Powder Coated White



1525-DH3 68" 600 lbs 2.1 hr 52 lbs

DOUBLE CLAMP LADDER RACK

2 BAR
Aluminum
Powder Coated White



1530-DH 68" 400 lbs 1.7 hr 36 lbs

DOUBLE CLAMP LADDER RACK

3 BAR
Aluminum
Powder Coated White



1530-DH3 68" 600 lbs 2.1 hr 45 lbs

POWDER COATED WHITE RACKS



LADDER RACKS

TOUGH

Military grade aluminum extrusions. High density plastic.

QUIET

Aerodynamic design with minimal wind noise.

SAFE

No metal contact to ladder, leading to longer life of ladders with less chance of fiberglass splinters.

*Max Rack will be available early 2015



INSTALL TIME



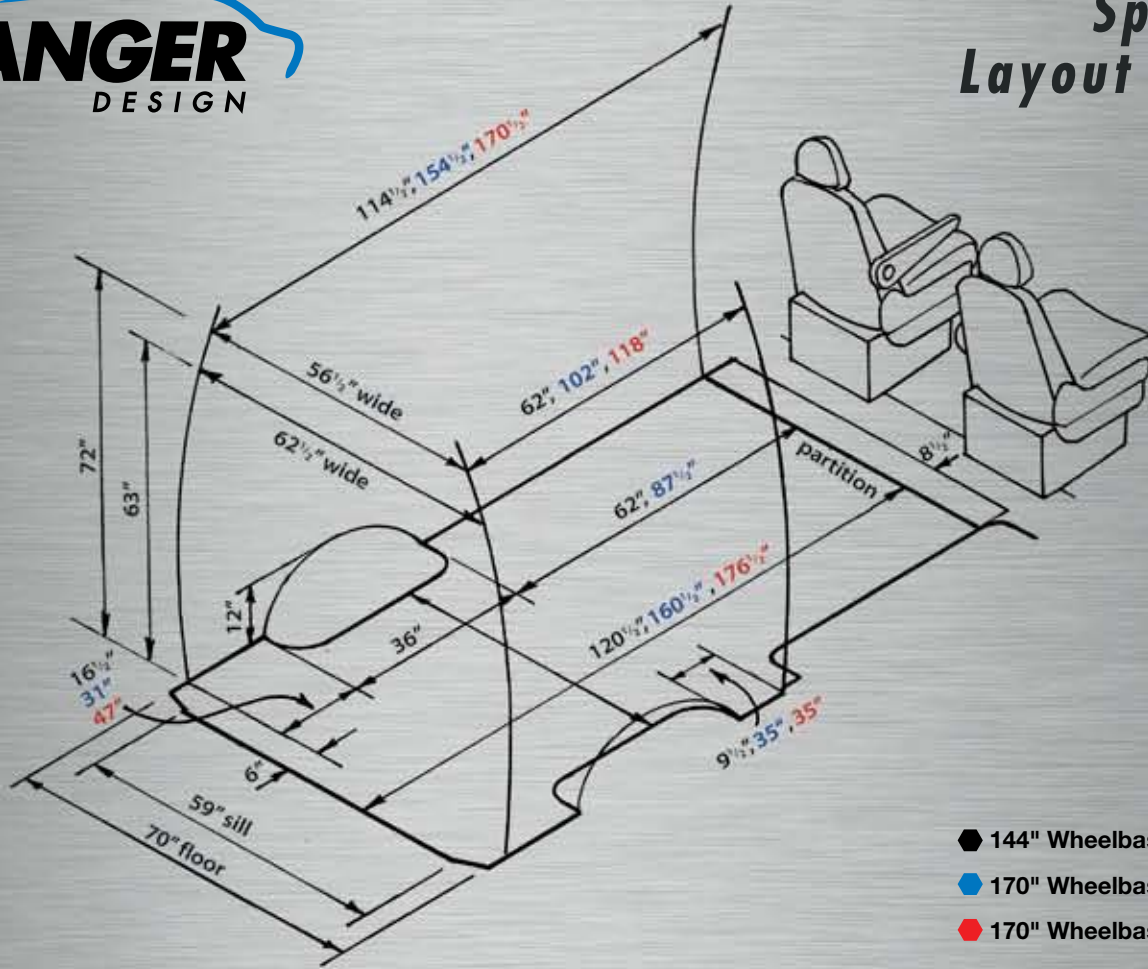
SHELF OPENING



WHEELBASE



ROOF HEIGHT



- 144" Wheelbase
- 170" Wheelbase Regular
- 170" Wheelbase Extended



CUSTOMER SERVICE
 cs@rangerdesigninc.com
 1 (800) 565-5321
 www.rangerdesign.com
 info@rangerdesign.com



YOUR LOCAL DEALER