

Equipment for Commercial Vehicles



**RAM CV
PACKAGE CATALOG**



ACCELERATE YOUR
BUSINESS WITH
**RANGER
QUICKSHIP**



RANGER
DESIGN



Contractor P 3/4
Package



Contractor P 5/6
Upgrade Kit



Contractor P 7/8
Package



In 1988 a small family business with a passion for innovation and speed of service began to build equipment for commercial vehicles. Now with factories in Rochester, NY and Montreal Canada, and a strong network of dealers across North America, the same passion still drives the company today.

In our modern fast-paced world, Ranger combines old-fashioned service with state of the art technology to bring you consistent quality and strength to meet the toughest demands. This is why more Tradesmen and Fleets across the nation are turning to Ranger solutions for shelving units, storage systems, partitions and ladder racks to answer their unique needs. Contact us today and experience the Ranger difference yourself!

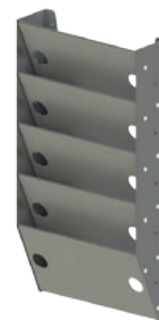
- The Ranger Team



Shelving



Ladder Racks



Accessories



177 lbs

Electrical P 9/10
Package



143 lbs



Service P 11/12
Package



134 lbs

Delivery P 13/14
Package

RANGER DESIGN PROVIDES THE POWER OF 24-HOUR SHIPPING

to get you on the road to success faster than ever! Ranger **QUICKSHIP**  guarantees that selected packages with the **QUICKSHIP**  logo will ship within 24 hours if ordered before 1PM. Visit our website www.rangerquickship.com for ordering details or contact one of our Customer Service representatives at cs@rangerdesigninc.com.



Quiet

A peaceful ride with no rattles



Quick

Fastest lead times in the industry



Tough

For the toughest



Payload

Engineered to save weight



Bin Shelving



Drawer Systems



Partitions

STEEL CONTRACTOR Package



**TOUGH
JOBS
TOUGH
TOOLS**



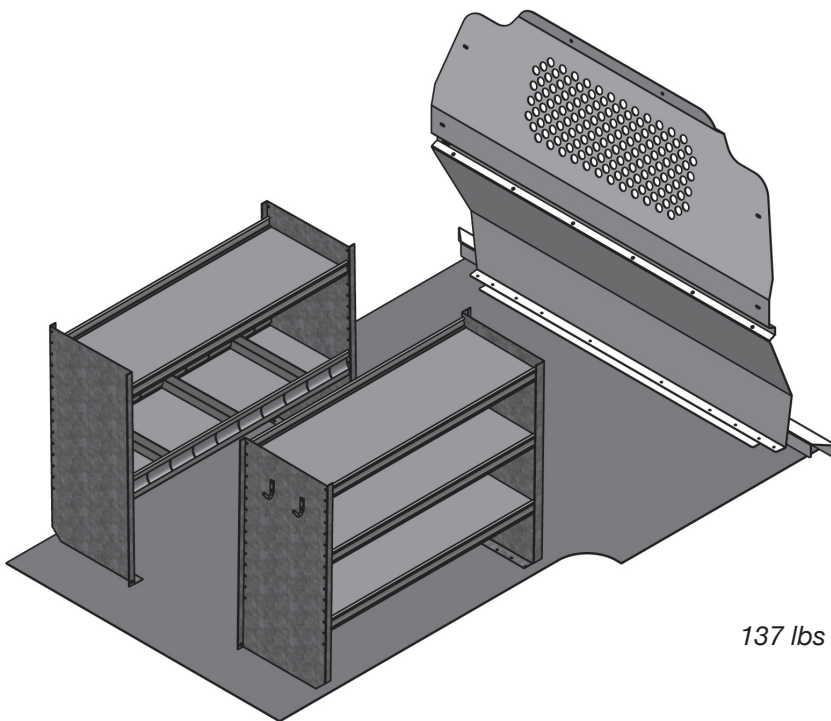
Optional
X02-A Fleetline Tool Drawer



Z10-Q Base Contractors Package



THIS PACKAGE IS
QUICKSHIP



137 lbs

- 1 **C10-Q** Contoured partition

- 1 **F38-G** Square back shelf unit, 38"w

- 1 **L38-G** Square back shelf unit, 38"w

- 2 **Y30-C** Coat hook



STEEL CONTRACTOR Package



**TOUGH
JOBS
TOUGH
TOOLS**

Optional

1510-M Standard ladder rack

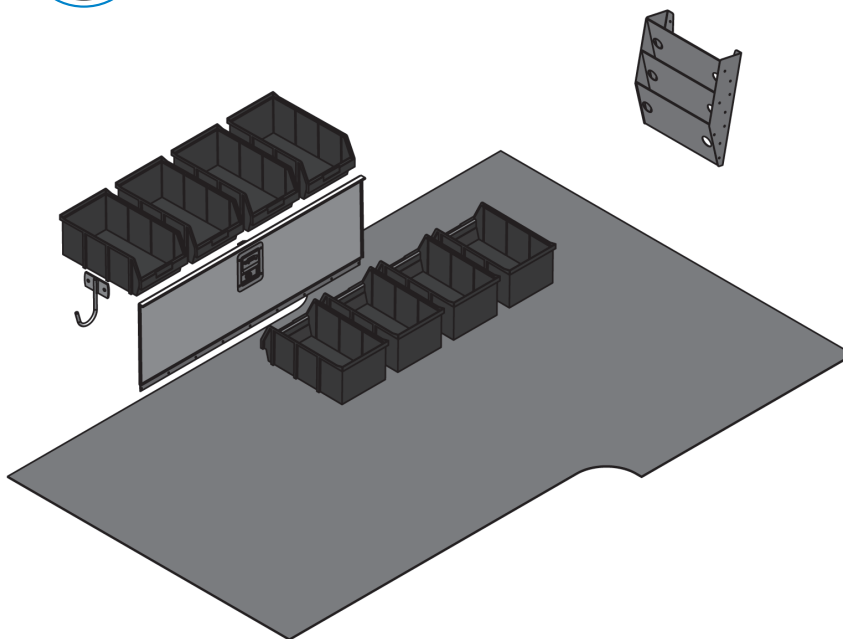


Z30-Q Contractor Upgrade Kit shown with a Z10-Q Contractor Package

Z30-Q Contractor Upgrade kit



THIS PACKAGE IS
QUICKSHIP



30 lbs

1 **Y11-D** Fleetline locking door

1 **6070** Fixed hook

1 **Y31-A** 3 Slot paper holder

8 **Y35-D** Large bin



Z30-Q Contractor Upgrade Kit shown with a Z10-Q Contractor Package.

ALUMINUM CONTRACTOR Package

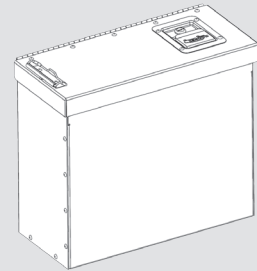


Model # 3010-DC = Drill free installation



Optional

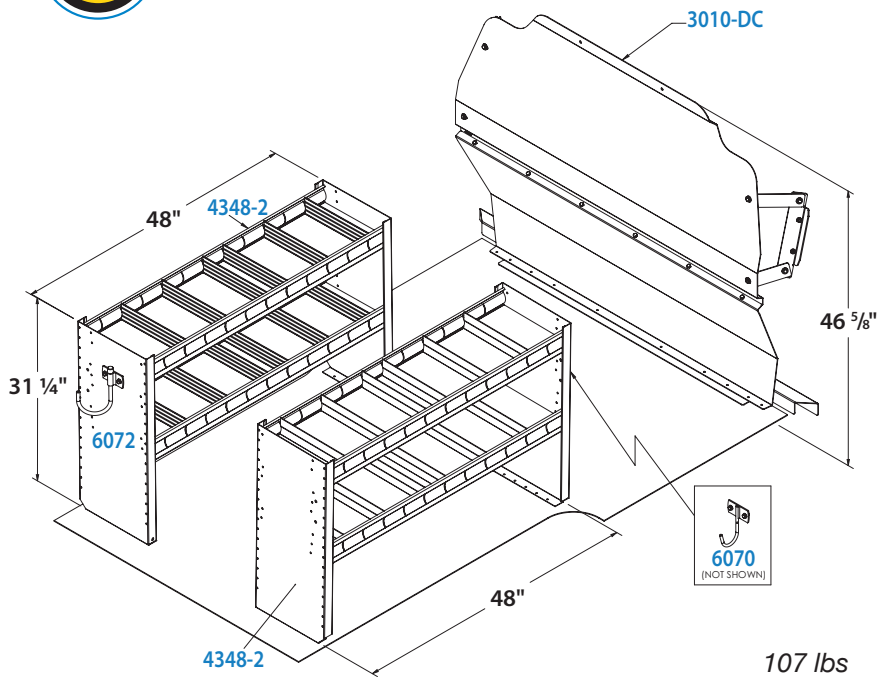
5040 Cab box with locking lid



H110 Contractors Package



THIS PACKAGE IS
QUICKSHIP



107 lbs

- 1 **3010-DC** Contoured safety partition

- 2 **4348-2** Square back shelf unit

- 1 **6070** 6" Fixed Hook, 3" opening

- 1 **6072** 8" Swivel hook, 4" opening



Package shown with optional
6511 Floor for Ram CV with
locking access doors.
See back cover

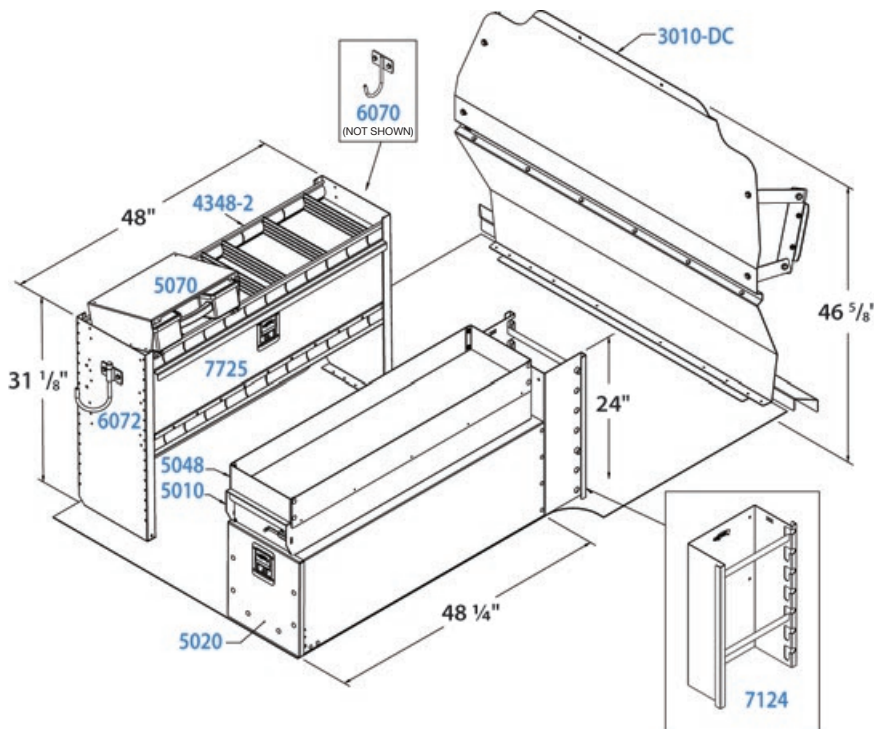
ALUMINUM ELECTRICAL Package



Optional
1530-M Double clamp ladder rack



H111 Electrical Package



177 lbs

- 1 **3010-DC** Contoured safety partition
- 1 **4348-2** Square back shelf unit
- 1 **5070** Partskeeper carry case w/ holder
- 1 **6070** 6" Fixed Hook, 3" opening
- 1 **6072** 8" Swivel hook, 4" opening
- 1 **7124** Reel holder with two 5/8" dia. rods
- 1 **7725** Locking door
- 1 **5020** Tool drawer
- 1 **5010** Partslider drawer
- 1 **5048** Top edge

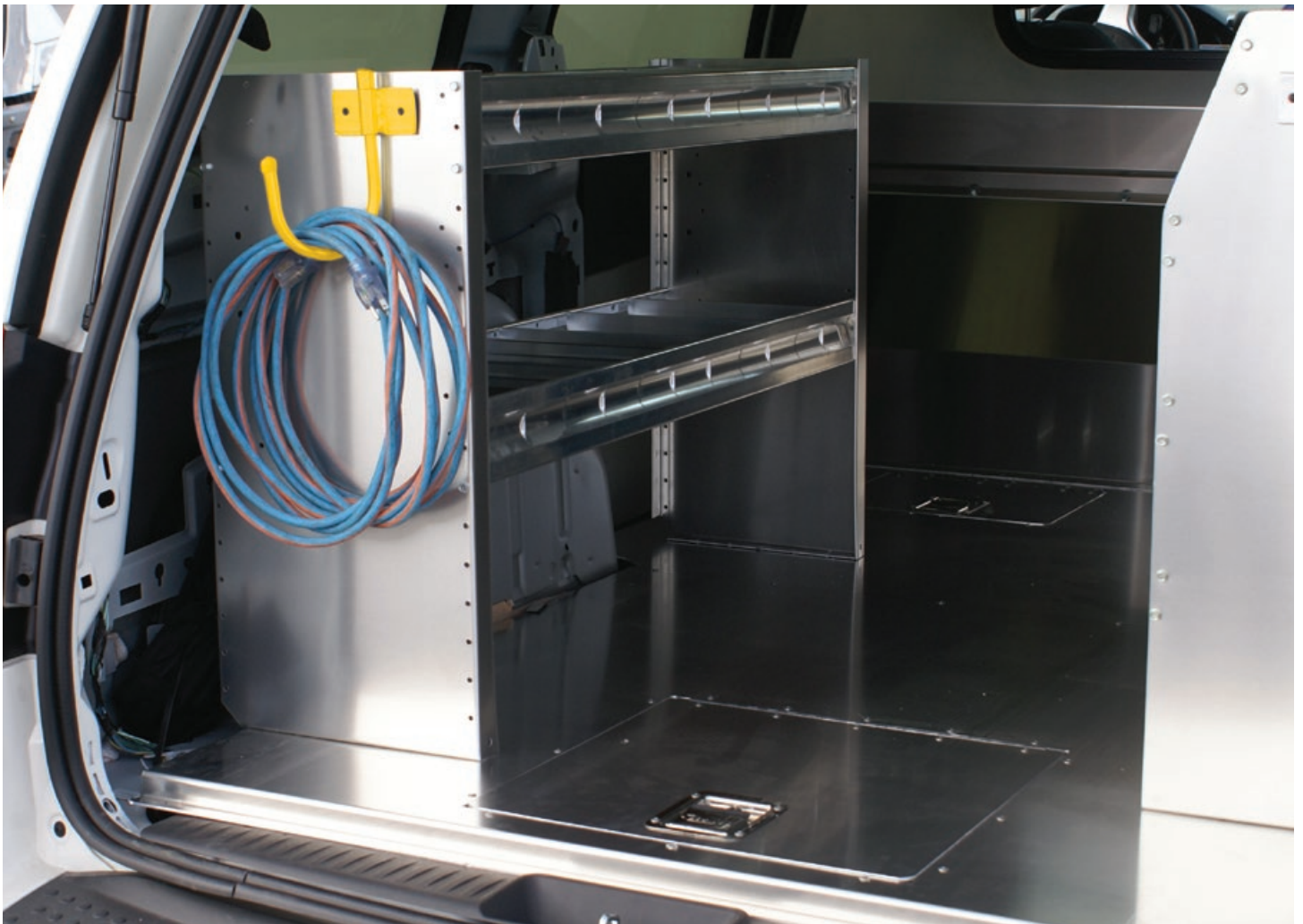


Package shown with optional 6511 Floor for Ram CV with locking access doors. See back cover

ALUMINUM **SERVICE** Package



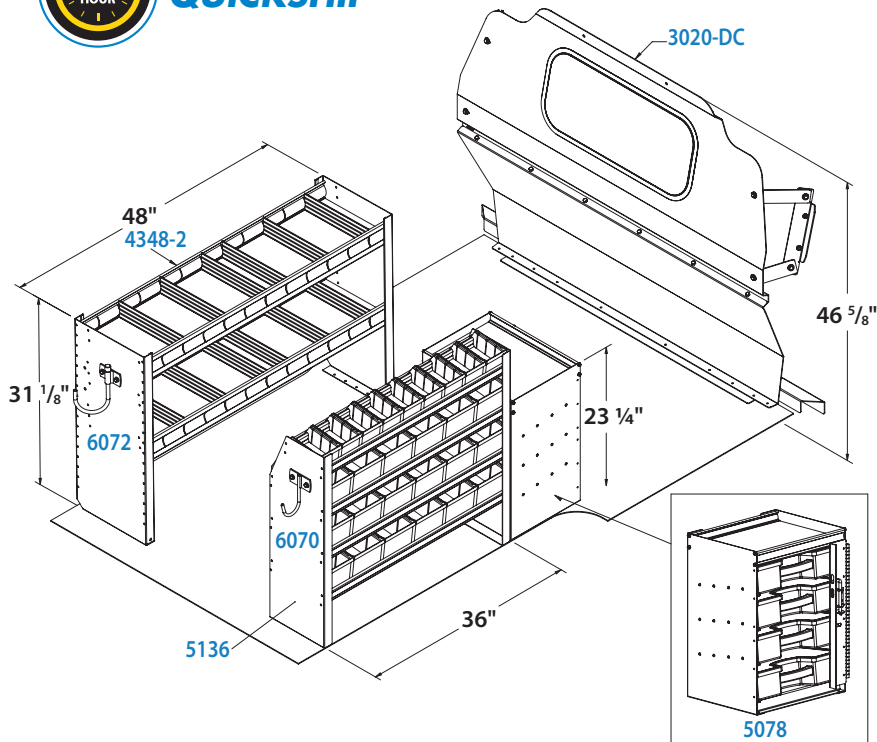
Optional
1525-M Combination ladder rack



H116 Service Package



THIS PACKAGE IS
QUICKSHIP



143 lbs

- 1 **3020-DC** Contoured partition, tempered glass window

- 1 **4348-2** Square back shelf unit

- 1 **5078** Partskeeper cabinet with 4 carry cases

- 1 **5136** Square back bin unit

- 1 **6070** 6" Fixed Hook, 3" opening

- 1 **6072** 8" Swivel hook, 4" opening



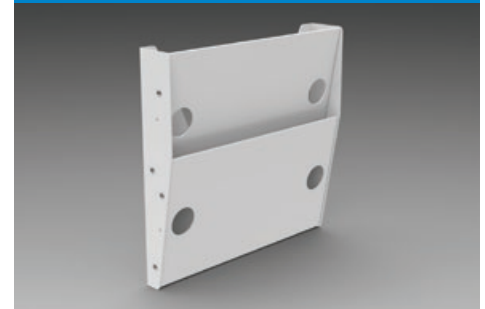
Package shown with optional 6511 Floor for Ram CV with locking access doors. See back cover

ALUMINUM DELIVERY Package

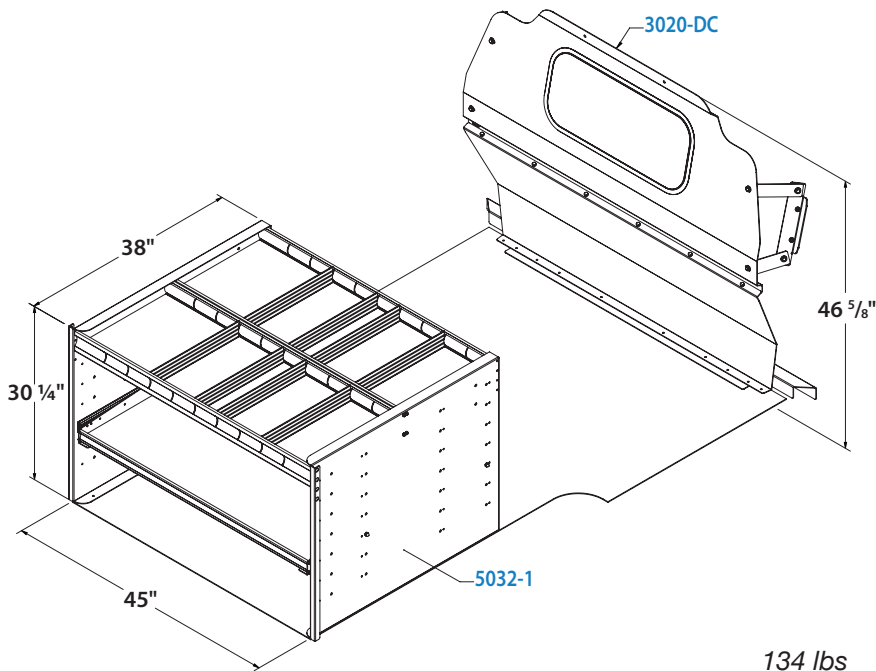


Model # 3020-DC

Optional
6067 2-Slot Paper Holder



H119 Delivery Package



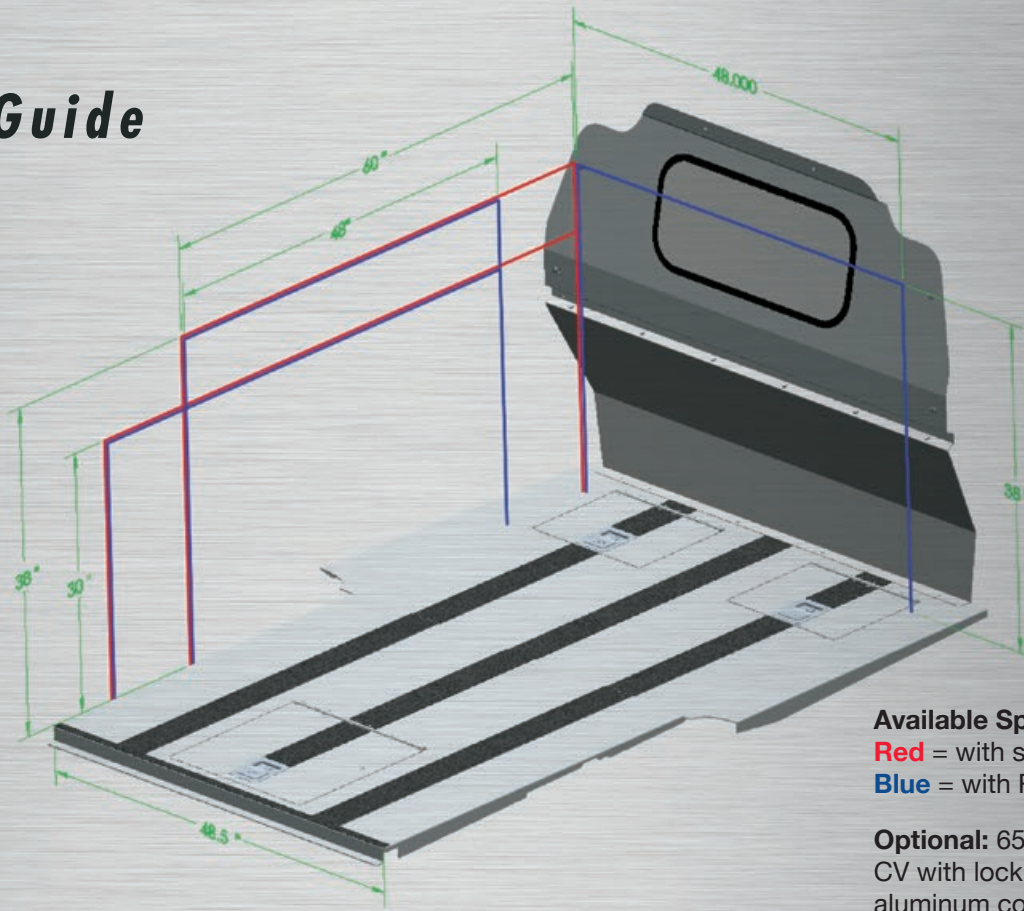
1 **3020-DC** Contoured partition, tempered glass window

1 **5032-1** Access Tray with 1 shelf / 1 drawer



Package shown with optional 6511 Floor for Ram CV with locking access doors. See back cover

Ram CV Layout Guide



Available Space:

Red = with standard floor

Blue = with Ranger 6511 floor

Optional: 6511 Floor for Ram CV with locking access doors, aluminum construction



RANGER
DESIGN

Customer Service:
(800)565-5321
cs@rangerdesigninc.com

www.rangerdesign.com
info@rangerdesign.com



Your Local Dealer:

M110-126